

IT IS THE INTENT OF THIS DOCUMENT TO BE A BASIS FOR TO CONSTRUCT THE PROJECT. IT IS, HOWEVER, THE GENERAL CONTRACTOR'S RESPONSIBILITY TO VERIFY THE ACCURACY OF DIMENSIONS, DETAILS OF CONSTRUCTION, AND TO OBTAIN A WRITTEN STRUCTURAL ANALYSIS FOR THE PROJECT SHOWING THAT THE PROPOSED CONSTRUCTION IS IN FULL COMPLIANCE WITH ALL APPLICABLE CODES AND REGULATIONS. THESE REQUIREMENTS AS STATED SHALL TAKE PRECEDENCE OVER ANY CONFLICTING INFORMATION, INCLUDING BUT NOT LIMITED TO, ANY ERRORS OR OMISSIONS THAT MAY OCCUR ON THIS DOCUMENT.

EXISTING CONDITIONS FOR:
OFFICE BUILDING
255 BUTLER AVENUE
MANHEIM TWP.

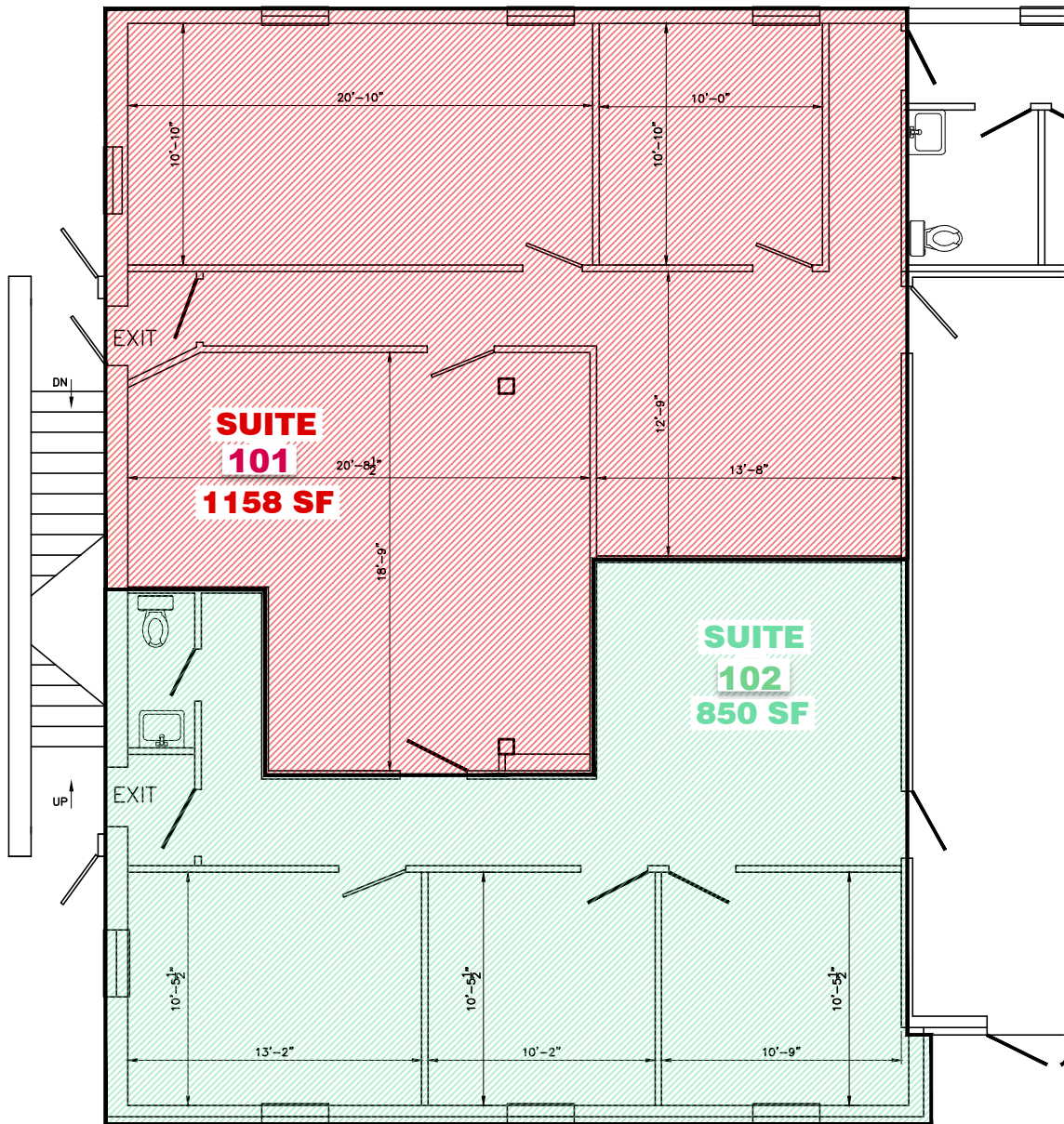
PROJECT:

REVISIONS	BY:
1	
2	
3	
4	
5	

DATE:
12/28/15
 SCALE:
1/8" = 1'-0"

SHEET NO.

A-1



FIRST FLOOR PLAN WEST

SUITE 102
850 SF

INCLUDES COMMON AREA FACTOR



SUITE 101
1158 SF

INCLUDES COMMON AREA FACTOR

